

# PRACTICE PROFILE

2024

# elevation

SENIORS LIVING  
EDUCATION  
EARLY LEARNING  
COMMERCIAL  
INDUSTRIAL  
COMMUNITY  
RESIDENTIAL  
MULTI RESIDENTIAL  
INTERIORS





## Contents

### COMPANY PROFILE

Our Purpose	4
Meet some of our Key Staff	5
Why Choose Elevation?	6
Our Sector Experience	8
Client Testimonials	10
References	11

### PROJECT DEVELOPMENT

Our Process	14
Additional Services	16

### KEY PROJECTS

Seniors Living	20
Education	24
Early Learning	28
Commercial / Industrial	32
Multi Residential	36
Community	40
Interiors	44

### OUR TEAM

Staff Profiles	50
----------------	----

### OFFICE DETAILS

Contact Details	78
-----------------	----

# CREATING PLACES, CONNECTING PEOPLE, BUILDING COMMUNITIES.

We connect people and places. At Elevation our focus is on providing our clients with the best possible solution for their needs, as well as the needs of the end user.





# MEET SOME OF OUR KEY STAFF



**Greg Adsett**

Managing Director  
Project Manager

Greg established Elevation Architecture in 2005. Greg is a registered Architect (QLD, NSW, VIC, WA & NZ) and licensed Project Manager with over 25 years experience in providing value to each phase of the development and construction process.



**Sascha Christensen**

Director  
Access Consultant  
LHA Registered Assessor

With over 25 years industry experience over a variety of projects both large and small, Sascha's experience ranges from small residential renovations, through to large mining camps and infrastructure projects. Sascha leads our Seniors Living sector.



**Rachel Tilleyshort**

Practice Director

With over 25 years experience across a broad spectrum of administration, financial & management roles, Rachel has been the driving force behind the implementation of new practice management systems at Elevation Architecture, and holds primary responsibility for the systems to ensure high levels of efficiency and organisation across the office.



**Trish Abel**

Senior Associate

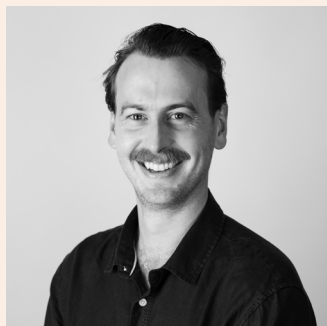
Trish is passionate about an innovative and sustainable approach to design, with her portfolio including residential, multi-residential, retail, commercial and community centre projects. Trish leads our Education sector.



**Dalbert Ton**

Senior Associate  
Design CAD Manager

Dal has experience across a range of commercial, residential, aged care & retirement living projects. He has a particular skill for delivering well-considered design within a client's program & budget. Dal leads our Commercial sector.



**David Stay**

Senior Associate

David has been the Project Lead for a number of large-scale projects, and is currently working across a variety of sectors within our office.



**Ben Lean**

Associate

Ben has been involved in an array of projects across the aged care, community and early learning sectors. Ben is a valuable member of our team and is a key leader within our early learning sector.

## WHY CHOOSE ELEVATION?

We have been delivering great architectural solutions on time and on budget for 25 years. The challenge for any architectural project is to get the most bang for your buck. To do this, Elevation Architecture are committed to understanding and documenting what success looks like to you, the client. We will understand your needs; we will listen, communicate openly, challenge the brief, and offer creative and innovative solutions while proactively leading and coordinating the design team.



# OUR COMMITMENT TO YOU

## VALUE

Creating value is at the heart of any architectural project. Expect us to challenge your brief and offer creative and innovative solutions. We'll help you achieve more.

## COMMUNICATION

Building is teamwork and the key to teamwork is communication. We have a collaborative approach in everything we do. And we will always do what we say we will do.

## LEADERSHIP

What does success look like to you?

Once we know, we'll lead the design team towards the outcome you're aiming for. We'll show leadership on important issues like buildability, risk and viability.

## EXPERIENCE COUNTS

We have successfully completed a wide variety of projects across multiple sectors, providing services to a range of private, commercial and institutional clients. Through these projects we have developed the skills that will be critical to the successful delivery of your project.

## QUALITY ASSURANCE

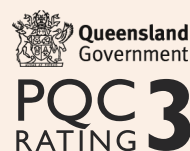
Our office size allows the Directors or Associates to personally be involved in every project. Elevation Architecture has developed an Integrated Management System, certified to the AS/NZS ISO 9001:2015 standard.

Having consequently gained a PQC rating of 3, we are a pre-qualified consultant with the Queensland Government. In addition, our Architects possess advanced knowledge regarding environmentally sustainable design.

## COMPUTER TECHNOLOGY

We employ the latest in computer technology. Our office utilises Graphisoft's ArchiCAD software package, a specialised program catered to architecture.

We also offer virtual reality as part of every project. Through 3D visualisation of proposed designs, client involvement in every step of the design process is made possible.



FS 571172



## SENIORS LIVING

Residential Aged Care  
Independent Living Developments  
Masterplanning



## EDUCATION

Primary Schools  
Secondary Schools  
Masterplanning



## EARLY LEARNING

Kindergartens  
Early Learning Centres  
Masterplanning



## COMMERCIAL

Office Buildings  
Warehouses and Showrooms  
Service Stations  
Convenience Shopping Centres



# RESIDENTIAL AND MULTI-RESIDENTIAL

Apartments & Townhouses  
New Houses  
House Renovations & Extensions  
Heritage Houses



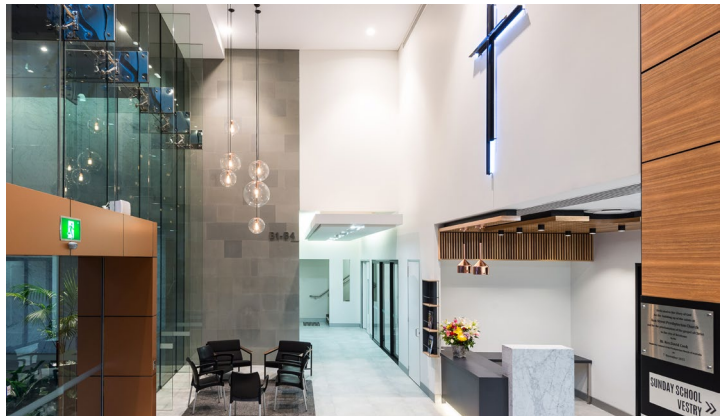
# INTERIORS

Retail  
Cafe  
Office



# COMMUNITY

Churches  
Community Centres & Clubs  
Sporting Facilities  
Youth Camps





# CLIENT TESTIMONIALS, NOT JUST OUR WORDS.

I have been developing property in and around Brisbane for over 20 years. During this time I have worked with quite a few architects from all over Brisbane. Four years ago my town planner suggested I give Elevation Architecture a try. Since I have started working with Elevation I have never been happier. They are prepared to “think outside the square” and are extremely innovative.

Bob Donnelly

The team at Elevation Architecture is encouraging and supportive in every way possible, having a good grasp of community expectations and needs as well as the often limited resources available to not-for-profit organisations such as ours.

Bev Schneider  
QLECS

Advice and guidance from the Elevation team proved invaluable during all phases of our project.

Bruce Wilson  
Club President

Elevation has made my job easier which is the highest compliment I can pay any consultant I employ.

Jon Johnson  
Property Developer

If you would like to contact any of these references, please call us on 3251 6900 and we will provide their contact details.



Arcare Seven Hills

# REFERENCES

## SENIORS LIVING

Murray Shuttleworth  
Arcare / The Knowles Group

Linda Beaumont  
Beaumont Care

Sue Lord  
Lollies Management Pty Ltd

## COMMERCIAL

Jason Thorn  
Thorn Group

Tom Richardson  
Australian Property  
Developments

David Brett  
Vision 2 Reality

Barry Glover  
Gantier Projects

Adam Hickey  
Stockland

## EARLY LEARNING

Chris & Gabrielle Giufre  
Elixir Management

Ella & Craig Brown  
Corella Constructions

Chris Volk  
Empirica

Clint Zahmel & Adam Vaggelas  
GCZF Holdings

## COMMUNITY

Peta & Vera Gill  
El Kanah Conference Centre

Kris Martin  
St Vincent de Paul Society

Peter Schilling  
Luther Heights Youth Camp

Peter Duffy  
Alexandra Heads Surf  
Lifesaving Club

Bruce Wilson  
Mt Gravatt Recreation &  
Sports Club

## RESIDENTIAL HOMES

Tom Richardson  
Australian Property  
Developments

Robert Ginns

Kirsten Smyth

## MULTI-RESIDENTIAL

Tom Richardson  
Australian Property  
Developments

Jason Thorn  
Thorn Group

Brian McNicol  
Danobourne

## EDUCATION

Stephen Greener  
Grace Lutheran Primary School

Les Barnard  
Living Faith Lutheran  
Primary School

Liam Casey  
St Patrick's College

Eddie Langenhoven  
QLECS

## SELECTED CONSULTANTS

Lochlan Mummery  
Urban Strategies

Matthew Neale  
Hammond & Neale

Jon Neale  
Milanovic Neale Consulting  
Engineers

Darren Cardy  
Ashburner Francis

Troy Paulsen  
Empire Engineering

Ian Buchanan  
IB Town Planning

Lance Hayes  
Survey Mark

Trevor Woodward  
Chilton Woodward &  
Associates







# PROJECT DEVELOPMENT

1

EXPLORE  
AND  
DESIGN

We'll collect information, brainstorm and consider how can we innovate. Once you've approved our fee proposal we'll start exploring design solutions that respond to your project brief, site and Council development regulations for the area.

Your feedback will inform and refine the design.

2

DEVELOPMENT  
APPROVAL  
(DA)

Consultants are engaged for the DA phase. Drawings and reports are prepared to submit to Council for a Development Approval (DA) Application.

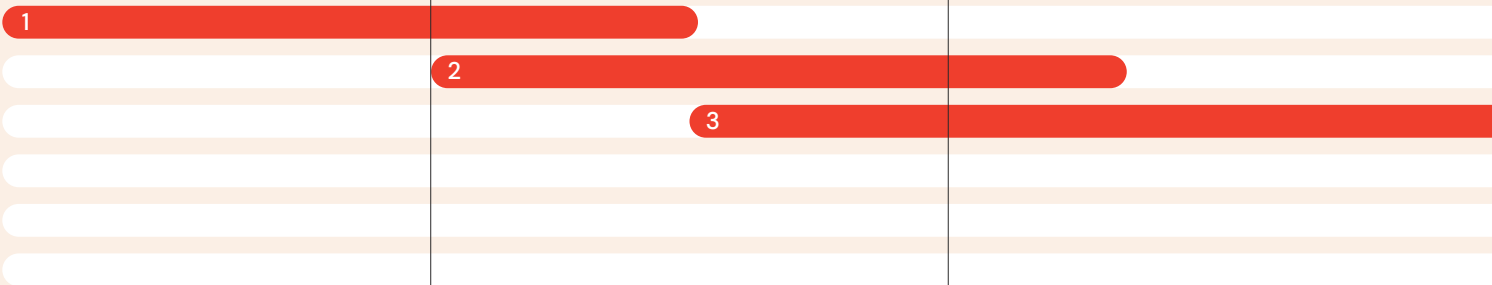
Council will assess the application and pending their requests we will work with you and the consultant team to ensure we meet the agreed upon success criteria.

3

DOCUMENTATION  
— BUILDING  
APPROVAL (BA)

The design is progressed to incorporate developed design ideas and Council requirements. Consultants provide further detail to their discipline's drawing set to help understand things like structure, earthworks, electrical, mechanical and water services.

After client sign-off, the design is translated to drawings that allow the project to be costed and a building permit issued.





# 4

## DOCUMENTATION — CONSTRUCTION (CD)

This stage is about creating a final set of instruction drawings that will inform the builder how the building goes together. Construction details, material finishes and the expected construction timeline are finalised. The contract documents are prepared to allow for the pricing.

In consultation with you, we will re-confirm the procurement method which defines the contractual relationship between the builder, architect and client.

# 5

## BUILD

The building stage has begun!

We ensure the intent of the drawing documentation is built. We will visit site regularly where we will instruct, assess and certify building work.

Communication throughout construction is paramount.

# 6

## COMPLETION

Finally, you've made it!

At handover, your project has been inspected for any issues (defects) and the necessary certificates have been obtained.

You're now ready to move in – let's celebrate!

4

5

6

## PROJECT MANAGEMENT

As well as traditional architectural services, we also offer Project Management. By taking on this role in-house, we make life easier for our clients by reducing the number of parties involved, and creating a single point-of-contact for all facets of the development process. As your Project Managers we will work with you to establish the project objectives, timeframe and budget; and we will interrogate risk and opportunity, quality, value management and key milestones. We are committed to establishing effective communication and leading the project team to achieve the clients' objectives.



## ACCESSIBILITY CONSULTANCY

Our internal accredited access consultant understands the needs of functionality and use, compliance and human rights in order to facilitate a project which is access compliant across various regulatory requirements. We aim to incorporate real world access solutions into all projects right from the start, ensuring cohesive, non-discriminatory, and well integrated outcomes for end users.

## REAL WORLD SUSTAINABILITY

In order to achieve real world sustainability in each project, we firstly recognise the impact of buildings on natural ecosystems and the liveability of our cities. Thus, we incorporate sustainable design as a core part of our design philosophy, and encourage integration between all participants in the design process. We consult widely and communicate effectively, providing a technical kit of parts to fulfil the design needs. Each individual project presents its own set of constraints and possibilities. We believe in creating unique solutions for each client, based on their values and requirements.





## VISUALISATION

Not everyone can fully comprehend line drawings. Our 3D visualisation service is surprisingly affordable, and helps you to communicate your ideas in a sharp, vibrant, easy-to-understand manner. If you require a visual representation of your design – for engaging your community, showcasing a future fitout, testing colour/finish combinations, marketing your project, or assisting potential buyers in visualising the potential of a property – we are here to help. We can use our existing 3D computer model to produce vibrant three-dimensional illustrations or renders for a surprisingly small fee.



## VIRTUAL REALITY

We now have the technology to allow you to put on our virtual reality goggles and participate in a truly immersive experience. Because we model all of our projects in three-dimensions using sophisticated CAD software, we can offer clients and consultants the use of virtual reality at every project phase. The feedback we have received so far is unequivocal. The VR experience is assisting our clients, consultants and even their prospective tenants in understanding the building, making decisions and crafting the interiors and finishes down to the finest detail. For a small fee, we can also produce a movie 'fly-through' which is proving a valuable marketing tool for many clients.



## LIVEABLE & SPECIALIST DISABILITY HOUSING

Liveable Housing Australia (LHA) is a framework of design provisions to allow residential dwellings to be easily adapted to changing user needs and is measured in Silver, Gold and Platinum Levels. Specialist Disability Accommodation (SDA) is a more specific set of requirements for dwellings intended to house people with disabilities, and is linked to the government's NDIS funding model that developers are beginning to take up with gusto. These two schemes are the industry and nation-wide standards for accessible residential design, and we are positioning ourselves ahead of the curve by offering these services in-house via staff that are fully accredited assessors for LHA and SDA.







# A FEW KEY PROJECTS



Client	Arcare
Location	Thornlands, Queensland
Size	11,300sqm
Completed	2022

# ARCARE THORNLANDS



Nestled in the quiet and beautiful Redland Bay hinterland, Arcare Thornlands is a homely and inviting two-storey aged care facility accommodating up to 92 residents. Although located in suburbia, the building is designed to capitalise on its bushland backdrop and filters natural light into the spacious common areas and bedrooms.

A significant focus of the design was to ensure the building never felt cramped or maze-like. The interiors open to four large courtyards with lush planting, expanding the sense of space and providing areas for residents to embrace Queensland's outdoor lifestyle. The courtyards facilitate resident activities and socialisation, and include a bowling

green, informal outdoor dining spaces, a BBQ area and veggie patch with associated potting area.

The common areas have tall raked ceilings and large windows that frame views to the outdoor spaces, and bring natural light deep into the floor plan. Characteristics of the Queensland vernacular are integrated into the architecture, and the palette of soft and warm colours enhances the comfortable and welcoming atmosphere.

Local residents also benefit from Arcare Thornlands, having access to its shops and cafe positioned on the site's most prominent corner.





Project Architect

Sascha Christensen

Resource Team

David Stay, Jonathan Lanham, Maddy Fitzgerald, Hannah Adsett

Client	Arcare/ Knowles Group
Location	Seven Hills, Queensland
Size	6,488sqm
Completed	2020

# ARCARE SEVEN HILLS



Arcare Seven Hills forms part of the Clearview Urban Village on the former Seven Hills TAFE site. The aged care facility is located at the end of a cul de sac and overlooks parkland and has views across Brisbane. The development has 106 residential suites, including a dedicated sensitive care wing. It's modern aesthetic complements the character of the new urban village.

Access to the site from an existing cul de sac was tight, and there were adjacent overland flows and protected trees that had to be retained. The limited access included a shared easement and a 10 metre cross fall over the site. This led to several design decisions that then dictated the building's footprint, in order to maximise the interior space within the shared easements.

The design follows the Brisbane City Council's 'Buildings that Breathe' initiative. Access to external balconies is maximised and operable windows and doors provide residents with flexibility in getting fresh air. Planters bring landscaping to the higher levels and there are sight lines to existing bushland. Natural light and are considered throughout the design, allowing residents to see outside from most corridors and orientate themselves easily.

Spaces throughout the building are designed for residents' enjoyment, comfort and well-being, and include a hairdresser salon, a central café, private dining area, sitting rooms, and lounge and dining spaces with external access and private decks.





Project Architect	Sascha Christensen
Resource Team	David Stay, Jonathan Lanham, Zac Bradford
Construction & Interiors	The Knowles Group

Client	St Patrick's College
Location	Shorncliffe, Queensland
Size	23,482 sqm over 2 adjacent sites
Completed	Living Document

# ST PATRICK'S COLLEGE MASTERPLAN



St Patrick's College occupies a relatively tight area in a picturesque location in Shorncliffe. The school campus is divided across two sites, separated by a road, and includes protected heritage buildings. In 2017, St Patrick's engaged Elevation to develop and continue its masterplan – it had little remaining ground space on the site, burgeoning student numbers (approximately 1400 students across years 5 to 12), and the desire to lead the way with 21st-century learning environments.

We undertook an in-depth consultation and investigation process at the school and worked collaboratively with staff, students and numerous stakeholders to fully understand

their wants and needs, now and projected into the future. We also watched the school in action and identified new opportunities.

Completed in 2019, the masterplan is a living document that includes eight phases of works projecting into the future, helping the school achieve value for money and accommodating future changes and demands. The first phases included classroom refurbishments and a new café that adds significant value to the school.





Project Architect

Trish Abel

Construction & Interiors

Building Services Design Pty Ltd, Chilton Woodward & Associates, CW Consulting, JP Corporation Pty Ltd, Malcom Douglas Consultants Pty Ltd, Thorn Group QLD Pty Ltd, Anderson Energy Efficiency, Mode Design, Survey Mark, DTS QLD, Ashburner Francis, Building Surveying Professionals, De Gee Group Builders.



Client	St Patrick's College
Location	Shorncliffe, Queensland
Size	600sqm
Completed	2020

# ST PATRICK'S COLLEGE CAFE



Stage 2 of Elevation's masterplan for St Patrick's College included a new café and eating and gathering area. The existing tuck shop was outdated, hidden away and the queue was unsustainable, even with a staggered lunch break.

We relocated the tuck shop to an underutilised space and created what has become the new central hub of the school. The new large-scale commercial kitchen and self-service café sit beneath an existing classroom and the café opens into a generous covered deck built over two existing water tanks. One side of the deck borders the main entry plaza; its simple roof form and neutral palette recede

against the adjacent heritage-listed school building. The other side of the deck incorporates stepped grandstand seating as a nod to the students' lunch-time handball tournaments.

The new café can facilitate all students at the same time, so there is no longer a staggered lunch break. The old tuck shop site has been converted into two general learning areas.





Project Architect	Greg Adsett
Resource Team	Sascha Christensen, Katie Furner
Project Team	Building Services Design Pty Ltd, Chilton Woodward & Associates, CW Consulting, JP Corporation Pty Ltd, Malcolm Douglas Consultants Pty Ltd, Thorn Group QLD Pty Ltd, Anderson Energy Efficiency, Mode Design, Ashburner Francis, Building Surveying Professionals, De Gee Group Builders..



Client	Wraith & Niclin Group
Location	Everton Park, Queensland
Size	414 sqm
Completed	2020

# HARMONY EARLY LEARNING JOURNEY EVERTON PARK



Our client asked Elevation to assist in designing and detailing the fit out of its multi-storey early learning centre in Everton Park.

The early learning centre is part of a larger development with multiple uses. Located on the first and second levels of the mixed-use commercial building, it has its own separate access for security purposes.

Our project team prepared feasibility plans to help the client understand the child occupancy numbers; coordinated and liaised with the consultant team; and responded to builder questions. Elevation also designed the playscape content.







Client	Harmony
Location	Balmoral, Queensland
Size	718.6 sqm
Completed	2019

# HARMONY EARLY LEARNING JOURNEY BALMORAL



Elevation worked with Harmony to deliver the building approval and construction documentation for Harmony Early Learning Journey Balmoral and assisted the client and builder in dealing with the complex building code legislation.

The early learning centre re-purposed two Queenslander houses already on the site. The houses were raised to build basement and ground levels below, and a lightweight roof structure was introduced to the first floor. This roof floats over the new suspended play deck and forms a contemporary link between the homes.

Harmony Early Learning Journey Balmoral has brought 113 early learning places to the neighbourhood for children up to 5 years of age.






---

Project Architect

Greg Adsett

---

Resource Team

Dalbert Ton, Katie Furner, Hannah Adsett, Zac Bradford

---



Client	Australian Unity
Location	Herston, Queensland
Size	1,700sqm
Completed	2021

# THE HERSTON QUARTER: EDITH CAVELL



Our refurbishment of the Edith Cavell Building sought to reimagine the significant heritage building for the future. Being a state-heritage listed building, the development approval process was extensive.

We treated existing damage and respected its historical form, character and setting, while breathing new life into the building and integrating new services and technologies. The revitalisation included the provision of commercial and centre activity tenancies on all three levels, serving a variety of uses including shops, food and drink outlets, offices, health care services and indoor sport and recreation.

Significant reparation works were required to restore the building to its original state. We largely retained the original internal features, including doors, windows, mouldings and



trims, and trimmed new openings with timber to contrast with the original brick. The main foyer, including the silky oak wall panelling and bronze plaque, the foundation stone and the original internal stairs, have been preserved with slight modifications. External and internal surfaces have been painted in a colour scheme determined by an archival record. One of the original sitting rooms and a cluster of nurses' cubicles have been retained as 'representative samples' demonstrating the original layout of the building.

We opened up the enclosed southern balconies with reconstructed timber balustrades, and inserted three new doors into existing openings on the southern façade to promote a sense of permeability and connectedness to the central public square. This activated frontage facilitates outdoor dining.





Project Lead	Greg Adsett
Resource Team	Dalbert Ton, Ben Lean
Project Team	Hassell, Hutchinson builders

Client	Fortescue Future Industries
Location	Gladstone, Queensland
Size	12,990 sqm
Completed	2023

# FORTESCUE FUTURE INDUSTRIES



Fortescue Future Industries’ (FFI) Green Energy Manufacturing (GEM) Centre is a milestone in the company’s strive for a global green energy transition. Hutchinson Builders appointed Elevation as the lead design consultant to progress early concepts developed by Geyer Design and With Architecture Studio. We were honoured to be involved in the realisation of Australia’s first multi-gigawatt electrolyser manufacturing facility enabling worldwide hydrogen production.

The GEM Centre is on a 4-hectare site on the outskirts of Gladstone. It comprises a 12,500-square-metre electrolyser manufacturing facility with supporting

500-square-metre administration office.

The sheer size of the building’s footprint, roughly equivalent to two football fields, was a key contributor to several design challenges. This included fire-engineered protection and separation strategies that permitted adequate safety measures while maintaining general operational requirements, and custom roof gutter profiles, brackets and sumps to manage rainwater collection and harvesting from the roof.





Project Architect	Dalbert Ton
Resource Team	Greg Adsett, Phap Huynh, Katie Furner, Bella De Paoli
Project Team	Hutchinson Builders

Client	Private Developer
Location	Moorooka, Queensland
Size	812 sqm
Completed	2019

# PATRICIA STREET TOWNHOUSES



Our client engaged Elevation to design Patricia Street Townhouses with the requirement that the development maximise site yield and comply with Brisbane City's Council's traditional building character overlay. (Our client had purchased the site from a previous owner whose application for seven townhouses was rejected by Council due to over-development and strong opposition from neighbours.)

Working under strict timeframes, we designed five two-storey townhouses configured around central driveway access. The street front has stepped boundary walls and the townhouses are in an upmarket Queenslander-style

with gable-end roofs and timber detail.

Through planning and design, and effective and collaborative communication, we conciliated neighbours and mitigated Council's concerns over the height and bulk of the development. We delivered the attractive residential development in a short timeframe and maximised investment return for our client.





---

Project Architect	Greg Adsett
Resource Team	Sascha Christensen, Katie Furner

---

Client	Magnacorp Pty Ltd
Location	Morningside, Queensland
Size	506 sqm
Completed	2016

# GRAYSON STREET APARTMENTS



Elevation designed and delivered four high-end town-houses in Morningside, Brisbane. The setbacks and height constraints meant the town-houses needed to be a combination of two- and three-storey relatively narrow dwellings that step up with tight and steeply sloping site.

The exterior design balances our client’s desire for a modern look with Brisbane City’s Council’s traditional building character overlay. The weatherboard cladding, batten screening and neutral tones provides an attractive street frontage that complements the residential architecture in the neighbourhood.

Interior spaces are spread over three levels. From the front entry on the ground floor, a timber staircase leads up to the contemporary open-plan living space and kitchen that open to generous decks. Full-height glazing maximises light and cross ventilation and takes advantage of the unobstructed city views. The simple lines in the living area allow the timber flooring and the contrasting tones in the kitchen cabinetwork to come to the fore. The colour palette and styling is continued in the bedrooms and bathrooms on the upper level.





Project Architect

Greg Adsett

Client	Lutheran Church of Australia
Location	Coolum, Queensland
Size	1,000 sqm
Completed	2019

# LUTHER HEIGHTS YOUTH CAMP



Elevation prepared a detailed 20-year masterplan for Luther Heights Youth Camp. Perched above the Point Arkwright Headland, it sits on a spectacular site and has views over the Pacific Ocean and surrounding Coolum landscape. Our clients, the Lutheran Church of Queensland, wanted to “create a kick-ass place for kids,” and an environment in which they could help children reach their potential.

Stage 1a of the masterplan included 92 beds across 14 cabins, a large activity space accommodating 200 people, a separate dining hall for 190 people and a small extension to an existing kitchen elsewhere on the site.

The sleeping, dining and activity areas have direct access to decks and views to the Pacific Ocean and surrounding bushland. By listening and exploring ideas with the client, all the spaces were designed to be unique and special, practical for daily use and offer a fun, safe place for children to stay and connect with friends.

To withstand the extreme coastal environment, we specified indoor and outdoor materials that are resistant to rust and corrosion so they won’t erode or break down with the salt in the air. These long-lasting buildings are intended to have a lifespan of more than 60 years.






---

Project Architect

Greg Adsett

Resource Team

Sascha Christensen, Dalbert Ton, Jonathan Lanham

---



Client	Ann Street Presbyterian Church
Location	Brisbane City, Queensland
Completed	2017

# ANN STREET PRESBYTERIAN CHURCH FITOUT



Elevation carried out extensive refurbishments of Ann Street Presbyterian Church's office interiors, including the entry foyer, kitchen facilities, Sunday school room and meeting spaces. Our client wanted to create a warm and welcoming environment and integrate visual cues to the church's identity, as well as new signage throughout.

We introduced timber veneer panelling, a reception desk and a back-lit cross to the prominent entry foyer, which is viewable from Ann Street. The crispness and elegance of the foyer is enhanced by the concrete-look floor tiles.

Other rooms were refurbished to create flexible spaces that accommodate various purposes, activities and user groups within the church.

We collaborated closely with the client, builder and fit-out team to complete the majority of the works within a short time-frame, due to an upcoming scheduled event.





Project Architect

Greg Adsett

Client	MSJA Lawyers
Location	Brisbane City, Queensland
Size	565 sqm
Completed	2023

# MSJA OFFICE FITOUT



Inspired Built approached Elevation to design the fit out of MSJA Lawyers' new premises on Eagle Street. The design retained portions of the existing interior elements to minimise waste, and to ensure the new work tied in well.

We increased the capacity of the office by introducing additional desks to the open office areas for paralegals and assistants, and maximised storage for paperwork. Enclosing the perimeter offices improved acoustic separation, while still promoting a sense of openness between the private offices and the central open office space.

The staff now have a new large, open kitchen and break-out

area. By removing some of the previous partition walls, we provided an open café and dining area with breathtaking views of the Story Bridge and Brisbane River.





Project Architect	Greg Adsett
Resource Team	Sascha Christensen, Hannah Adsett, Alana Markie, Bella De Paoli
Project Team	Inspired Built

Client	The Banyans
Location	Albion, Queensland
Completed	2021

# THE BANYANS MEDICAL CENTRE



Elevation designed and documented the fit out of Banyans Medical Centre and Specialists Clinic, located within an existing medical precinct in Bowen Hills, Brisbane. We led the project through the design and construct process and worked with the client, builder and end user to ensure all decisions were functional, within budget and continued the desired aesthetic.

The scope encompassed four suites within the building, with more than 1,000 square metres. This included the medical centre (consultant rooms, treatment rooms, pathology, pharmacy, generous reception and waiting area); the staff rooms; cafe with commercial kitchen; and wellness

centre with yoga, gym and consulting rooms.

The base building provided a generous ceiling height, and high-level glazing allowed natural light to flow into the consult rooms, adjoining corridors and internal spaces.

Elevation developed an elegant and high-quality palette of finishes, with several feature materials and details. All spaces are high quality, warm and inviting with a prestigious look and feel, and the wellness centre has a sophisticated club-like atmosphere .





Project Lead	David Stay
Resource Team	Greg Adsett, Sascha Christensen, Katie Roome
Construction & Interiors	Elevation Architecture



# Edith Cavell

## The Edith Cavell Building

The Edith Cavell Block was built in 1922. It was built as the home for nurses working at the Hospital for Sick Children (later the Royal Children's Hospital). The building was named after British nurse Edith Cavell. During World War I she cared for wounded soldiers and helped them escape to England via the Netherlands. Edith Cavell paid the ultimate price for her duty to her patients. She became a revered figure for her bravery and sacrifice. This building had accommodation for 108 nurses, and a hall for the Nurses. It also included rooms for sick nurses, storerooms, waiting rooms and sitting rooms. Nurses lived full time in this building until the late 1980s when it was no longer compulsory to live on site.



HERSTON  
HEALTH PRECINCT

THE EDITH CAVELL MEMORIAL  
THIS STONE WAS LAID ON THE 14<sup>TH</sup> DAY OF FEBRUARY 1921 BY  
HIS EXCELLENCY  
THE RIGHT HONOURABLE SIR MATTHEW NATHAN G.C.M.G.  
GOVERNOR OF QUEENSLAND.  
MR H. LOXLEY PRESIDENT MR F. EDWARDS G. THEODORE CHAIRMAN



THE  
TEAM

# GREG ADSETT

Managing Director / Architect /  
Project Manager / FRAIA / GAICD



Actively involved in the industry for more than 30 years, Greg is an invaluable project and business asset within the architecture and development community. He is co-founder of Elevation Architecture and thrives on building relationships and maximising project potential. In recognition of his dedication to promoting and contributing to the profession of architecture, Greg was admitted as a Fellow of the Royal Australian Institute of Architecture in 2024.

Greg is a registered architect in Queensland, Victoria, Northern Territory and New Zealand, and a licensed project manager. This enables him to seamlessly deliver projects across a range of sectors, including aged care, education, community, commercial and retail. Extensive experience has broadened his industry knowledge base to include areas such as project finance and strategic planning. He is also highly skilled in identifying potential project issues, problem solving and facilitating clear communication with clients and user groups.

Committed to creating greater architectural, construction and organisational outcomes for social and community groups, Greg is actively involved with the wider community. He was chairman (2017–20) and board member (2011–20) of Presbyterian and Methodist Schools Association and is currently on the board of Harmony Earth, a not-for-profit the seed self-supporting social enterprises in India.

## Qualifications

Registered Architect	2812 (QLD) 8372 (NSW) 17199 (VIC) 5571 (NZ)
Builder Project Management	QBCC Licensed Builder — Project Management Services
Fellow	Australian Institute of Architects
Graduate Member	Australian Institute of Company Directors
Bachelor of Architecture	Queensland University of Technology
Bachelor of Design Studies	University of Queensland

## Professional Experience

2004 – present	Elevation Architecture
1997 – 2004	Adsett Lillis Architects — Partner
1993 – 1997	Adsett Ward Architects — Partner
1988 – 1992	Thomson Adsett & Partners Architects

## KEY PROJECTS

Main Western Road Seniors Living / Arcare Springwood / Grace Lutheran Primary School / St Patricks College / St Pauls Early Learning Centre / Multinail Australia Office Building / Grayson Street Townhouses / Markwell Street Residence / Jellinbah Mining Camp / El Kanah Guesthouse & Conference Centre



# SASCHA CHRISTENSEN

Director / Architect / Access  
Consultant / SDA Assessor / RAIA /  
AACA



Sascha joined the Elevation team in 2008. With nearly 30 years of industry experience, Sascha has been actively involved in a variety of projects ranging from small residential renovations to large mining camps and infrastructure projects. Sascha possesses a wealth of knowledge regarding local legislation and relevant codes and standards and provides innovative and creative design solutions across the community, health, senior living, education and childcare sectors.

Being community-minded, Sascha has a strong interest in sustainable and universal design and became a qualified Access Consultant in 2014. She believes good design and a successful outcome seamlessly integrates accessibility and functionality for all abilities and ages and is considered throughout the design process, from concept stage to completion.

Sascha has two school aged children and is actively in her school community.

## Qualifications

Na Registered Architect	3646 (QLD)
Bachelor of Architecture	Queensland University of Technology
Certificate IV	Access Consultant
SDA Assessor	Reg: SDA00035

## Professional Experience

2009 – present	Elevation Architecture
2007 – 2008	SCB Design – Director
2004 – 2007	Sustainable – Project Architect
2002 – 2004	Interworks – Project Architect
1998 – 2002	Briggs Peterson and Buhr – Student Architect

## KEY PROJECTS

Arcare (Caboolture, Hope Island, Maroochydore, Noosa, Parkinson, Parkwood, Peregrine Springs, Pimpama, Seven Hills, Springfield, St James, Taigum) / Beaumont Care Wamuran / Grace Lutheran Primary School / Burke Shire Nijinda Durlga / Jellinbah 557 Man Mining Camp / Combabula 550 Man Mining Camp

# RACHEL TILLEYSHORT

Practice Director



With over 25 years’ experience across a broad spectrum of administration, financial & management roles, Rachel is a qualified accountant that has worked diligently to create a role that is so much more than your typical business accountant.

Having been with Elevation since 2010, Rachel started out as an Administrator for the company however quickly realised that the company required more than this in order to grow and evolve.

Rachel has been the driving force behind the implementation of new practice management systems at Elevation Architecture, and holds primary responsibility for the systems to ensure high levels of efficiency and organisation across the entire office on a daily basis.

From this highly-organised management position, to the position of supporter and advocate for an encouraging and inspiring office culture for staff, Rachel has carved out a unique and important role for herself that heightens the levels of both productivity and staff satisfaction within the company.

### Qualifications

Bachelor of Accounting	University of South Australia
------------------------	-------------------------------

### Professional Experience

2010 – present	Elevation Architecture
2006 – 2009	Sunsuper – Business Services Coordinator
2005 – 2006	The Jetty Specialist – Applications Officer
2004 – 2005	The Jetty Specialist – Accounts Supervisor
1994 – 2004	Various administrative roles within the IT industry



# PATRICIA ABEL

Associate Director / Architect / LHA  
Registered Assessor / RAI



Joining the Elevation team in 2015, Trish has an astute understanding of a wide range of project types. With particular focus on client relationships and team collaboration, Trish is very experienced in managing the architectural process from inception to completion. She is passionate about developing innovative and sustainable design solutions that achieve the best outcome for the client and end user.

Highly skilled in the development of school masterplans Trish fosters a collaborative and inclusive environment with school leadership teams to develop innovative and tangible solutions, while maintaining a high-quality design aesthetic.

Trish’s portfolio includes high-end residential and multi-residential as well as community centres and retail, commercial and industrial projects. Many have been published and several recognised in the Australian Institute of Architects Awards.

Trish has two young daughters, and enjoys spending time with her family and their dog Hunter during her down time.

## Qualifications

Registered Architect	4524(QLD)
Master of Architecture	University of Queensland
Bachelor of Design Studies	University of Queensland
LHA Assessor	Reg: 20239

## Professional Experience

2015 – present	Elevation Architecture
2013 – 2015	Travel
2006 – 2013	Push

## KEY PROJECTS

St Patricks College / Arethusa College / Concordia Lutheran College / Woolloowin Early Learning Centre / Handford Road Early Learning Centre / Dixon Drive Early Learning Centre / Randall Road Early Learning Centre (DA) / Darra Station Road Early Learning Centre / Cardinal Street Early Learning Centre / Elderslie Early Learning Centre

# DALBERT TON

Senior Associate / Architect / Design  
CAD Manager / RAIA



Dalbert joined the Elevation team in 2014, bringing with him 10 years of experience across a range of commercial, residential, aged care and retirement living projects.

Skilled at delivering well-considered design within a client's program and budget, Dal is a pivotal member of our commercial and multi-residential team. He is consistently expanding his project knowledge and technological experience, and finds true value in exploring out-of-the-box thinking and new ideas. Dal can often be found sharing this knowledge and experience with junior team members.

Outside of work, Dal loves mountain biking, tennis, fishing, food, sneakers and spending time with family.

## Qualifications

Registered Architect	5187 (QLD)
Bachelor of Architecture	University of Queensland

## Professional Experience

2014 - present	Elevation Architecture
2010 - 2014	Merrin & Cranston
2004 - 2010	Williamson Architects

## KEY PROJECTS

Fortescue Future Industries Manufacturing Centre / Fifth Avenue Lifestyle / Multinail Australia Office Building / Little Street Apartments / Lighting Illusions



# DAVID STAY

Senior Associate / Architect / RAlA



Since joining the Elevation team in 2017, David has been the project lead for a number of large-scale projects across a variety of sectors.

David has professional experience in residential, retail, commercial, health and aged care projects of varying scale. With a background in construction and an understanding of the end user, Dave brings a wealth of knowledge to every project. He has a passion to see communication take precedence among all stakeholders in order to achieve the best project outcomes.

David has volunteered for church and not-for-profit organisations, such as Red Frogs, for more than 10 years. He finds great joy in giving back by being involved in community-related design projects or volunteering for an organisation.

## Qualifications

Registered Architect	5452 (QLD)
Master of Architecture	University of Queensland
Bachelor of Design Studies	University of Queensland

## Professional Experience

2017 – present	Elevation Architecture
2015 – 2017	DC8 Studio
2014 – 2015	Nexus Church
2012 – 2013	PSA Consulting
2010 – 2012	Arkhefield

## KEY PROJECTS

The Banyans Health Plus / Redcliffe Uniting Community Hub / Arcare Seven Hills / Beaumont Care Wamuran / Arcare Noosa / Arcare Logan Reserve

# BEN LEAN

Associate / Architect / RAlA



Ben joined the Elevation team in 2019, after completing his Master of Architecture at Queensland University of Technology.

Ben has been involved in an array of projects across the aged care, community and childcare sectors. During Ben’s architectural studies, he worked as a labourer for a local builder, then became a junior project manager. This invaluable construction experience goes hand in hand with Ben’s understanding of architectural detailing and project deliverables.

Ben values spending time with family and friends, and making the most of the outdoors, whether it’s surfing, mountain biking or tennis. He also enjoys leading and partaking in local community and church events.

## Qualifications

Registered Architect	6000 (QLD)
Master of Architecture	Queensland University of Technology
Bachelor of Design	Queensland University of Technology

## Professional Experience

2016 – present	Elevation Architecture
2016 – 2019	Merrin & Cranston
2014 – 2016	JAAM Projects

## KEY PROJECTS

Boundary Road Early Learning Centre / Kurts Street Early Learning Centre / Harmony Early Learning Journey Everton Park / Eden Academy Bardon



# PHAP HUYNH

Architect / RAIA



Since joining the Elevation team in 2015, Phap has been the project lead on commercial, residential, multi-residential and retail projects as well as service stations and mental health facilities. Phap brings this wealth of experience, along with his functional and practical approach to architecture and design, to every project he takes on.

In addition to being a member of our architectural team, Phap is our CAD/BIM leader and at the forefront of the latest modelling and drafting software. Nicknamed ‘The fixer’ in the Elevation office, Phap can get to the bottom of any CAD issue we may come across.

Phap is a long-serving youth group leader and coordinator in the Vietnamese Catholic community. He enjoys working hard and giving back to the community in every aspect of his life.

### Qualifications

Registered Architect	5295 (QLD)
Master of Architecture	University of Queensland
Bachelor of Design Studies	University of Queensland

### Professional Experience

2015 – present	Elevation Architecture
2007 – 2014	Henri Van Riet Architects

### KEY PROJECTS

Ipswich Show Society / Liberty Fuel Corporation / United Service Station / Bold Living Office Showroom & Warehouse

# ANDREA PICANZA

Architect



Joining the Elevation team in 2023, Andrea is a registered architect in Queensland and Italy. Andrea started his career in the luxury retail industry in Europe where he cultivated a meticulous attention to detail. After moving to Australia, Andrea expanded his portfolio to encompass high-end residential and educational construction.

Andrea strives to incorporate his values of sustainability into his designs. He enjoys finding solutions to the day-to-day challenges especially on-site construction issues.

Andrea loves spending time with his wife and children, going to the beach and cooking at home.

### Qualifications

Registered Architect	5638 (QLD), 7195 (Florence)
Master of Architecture	University of Florence

### Professional Experience

2023 – present	Elevation Architecture
2021 – 2023	Tonic Design & Architecture
2011 – 2021	PentAchi Sustainable Synergetic Architecture
2009 – 2011	Ultralinea Architecture
2006 – 2009	ASZ Architetti



# ALBE PANG

Architect



Albe joined the Elevation team in 2023. She is a registered architect who transitioned from a career as a medical researcher in biomedical science.

Drawing on this diverse background, Albe brings a distinctive fusion of creativity, analytical acumen and adept problem solving to her work. She has expertise in high-end residential projects, where her focus on liveability and user experience has been instrumental in crafting spaces that resonate with both functionality and aesthetics.

Albe is a published author, writing captivating children’s books that explore Hong Kong’s architectural wonders. She is a ballet dancer and enjoys spending time with friends and family and indulging in good food and wine.

Qualifications

Registered Architect	5765 (QLD)
Master of Architecture	Queensland University of Technology
Bachelor of Design	Queensland University of Technology
Bachelor of Science	Queensland University of Technology

Professional Experience

2023 – present	Elevation Architecture
2017 – 2023	Dion Seminara Architecture
2016 – 2017	Queensland Class
2005 – 2011	Department of Obstetrics & Gynaecology

# JONATHAN LANHAM

Architect



Jono joined the Elevation team in 2015 when he was an undergraduate student at Queensland University of Technology. He has since completed his Master of Architecture and become a registered architect.

With experience in the aged care, education, commercial, multi-residential and childcare sectors, Jono is highly skilled in design and documentation. He loves to break out the graphic markers during the concept design stage and relishes the many challenges that the construction process offers.

Jono stays ahead of the curve with the latest CAD drafting and modelling techniques, has a keen eye for detail and enjoys refining big ideas so they are built efficiently, precisely and beautifully. He strives to understand the values and requirements of key stakeholders so that the final product is the best it can be.

Jono enjoys hiking and outdoor sports. He is a keen cricketer and can be relied on to relay and commentate the latest play.

## Qualifications

Registered Architect	6173 (QLD)
Master of Architecture	Queensland University of Technology
Bachelor of Architectural Design	Queensland University of Technology

## Professional Experience

2015 – present	Elevation Architecture
----------------	------------------------

## KEY PROJECTS

Arcare Springfield, Seven Hills, Parkwood, Noosa / Burleigh Heads Early Learning Centre / Grace Lutheran Kindergarten / Forest Lake Lodge Stage B / Carmichael College / Arethusa College



# CHUCK MYUNG

Architect



Chuck has been part of the Elevation team since 2022. He has a bachelor of Architecture and Master of Architecture from Monash University and has gained a variety of experience across different countries.

Chuck’s experience in architecture covers a broad range of project types, including education, multi-residential, industrial and commercial. He has an innate ability to critically analyse a space and produce a design solution with clarity and conceptual strength. Consistently thinking outside the box, Chuck pushes the boundaries to explore possibilities.

Chuck enjoys experiencing different cultures and loves to try out new destinations and cuisines. He is active in the local Korean community and enjoys the various networking opportunities it provides.

### Qualifications

Registered Architect	6180 (QLD)
Master of Architecture	Monash University
Bachelor of Architectural Design	Monash University

### Professional Experience

2022 – present	Elevation Architecture
2020 – 2022	Chang-jo Architects, MAPP Group
2017 – 2019	Paul Morgan Architects

# HUGO RIVEROS

CAD Specialist



Hugo re-joined Elevation in 2023 as a CAD Specialist. With more than 25 years of experience in the architectural industry, Hugo has worked on some of Australia’s most elite architecture firms including Woods Bagot, Rice Daubney, MMA Architects, Suturs Architects, ML Design and Deicke Richards. He has a wealth of expertise across diverse sectors and on projects up to one billion dollars.

An early adopter of BIM, Hugo is a Registered Graphisoft Consultant for the Queensland region, conducting ArchiCAD and Artlantis training and assisting companies to transition from 2D design software to BIM. He is also a regular guest speaker at building conferences, seminars and events.

Hugo has had his own designs published in magazines and featured on television programs, including Better homes and Gardens, The New Inventors, Today and Australia’s Best Houses. His recent passion is 3D printing, and he enjoys mentoring up-and-coming designers.

### Qualifications

Bachelor of Science (Architecture)	University of Sydney
Associate Diploma Civil Engineering	TAFE

### Professional Experience

2023 – present	Elevation Architecture
2018 – 2023	Towill Design Architects
2016 – 2018	ETS Architects
2015 – 2016	PDC BIM Pty Ltd
2013 – 2015	Shayer Group
2011 – 2015	Dixon Homes / Tamawood / Astivita



# RICHELLE LONERGAN

Senior Interior Designer



Joining the Elevation team in 2024, Richelle brings 15 years of experience and a passion for interior design. Richelle has experience in education, community and aged care projects and is dedicated to providing innovative design solutions for clients.

With a keen eye for detail, Richelle has led and been involved in all stages of the design process, from initial concepts and design and documentation to material selection and soft furnishings. Richelle is committed to building strong relationships with clients and industry professionals as well as mentoring junior staff.

She also stays connected to the industry outside of the office through her involvement in the Australian Institute of Architects Awards Jury.

In her spare time, Richelle enjoys spending time with her two daughters, finding the next best breakfast spot and keeping up to date on real estate and renovation trends.

## Qualifications

Bachelor of Design (Interior Design)	Queensland University of Technology
--------------------------------------	-------------------------------------

## Professional Experience

2024 – present	Elevation Architecture
2015 – 2024	Fulton Trotter Architects
2015 – 2015	Country Road Group
2014 – 2014	David Jones
2008 – 2014	Merrin & Cranston Architects

# BELLA DE PAOLI

Visualisation Specialist



Bella joined the Elevation team in 2020 as our administrative and marketing assistant and has since become our visualisation specialist.

Always involved in the creative industry, Bella is passionate about creating visually appealing content that strives for realism and authenticity. She has a keen eye for detail, an interest in interior design and has been involved in the film industry working on various short films.

Whether it’s a trip to the gym, a long run or a walk, Bella loves to being active. She enjoys a good coffee, piano, photography and cooking, always researching new recipes and experimenting with flavours, sharing her hospitality with family and friends.

## Qualifications

Diploma in Filmmaking	New York Film Academy
Bachelor of Arts, Screen Studies & Production	Griffith University

## Professional Experience

2020 - present	Elevation Architecture
----------------	------------------------



# ANDREA VILLAFANE

Architectural Graduate



Andrea first joined Elevation in 2007 and re-joined in 2023 after acquiring valuable experience with leading architecture and urban design firms in Brisbane and Sydney. Andrea began her architectural studies in Columbia, and has contributed to numerous projects across Australia, including residential, commercial, aged care and industrial.

Andrea excels at applying her creative thinking and technical knowledge to creating engaging and functional spaces. She is driven to work on meaningful and innovative projects that have a positive impact on the environment and society.

Andrea enjoys exploring the outdoors and has travelled across Australia, from the tropical rainforest of Cape Tribulation to the stunning coral reef of Ningaloo.

### Qualifications

Master of Property & Development	University of New South Wales
Bachelor of Architecture	Columbia

### Professional Experience

2023 – present	Elevation Architecture
2020 – 2023	Urban Design Solutions
2019 – 2020	Plus Architecture
2015 – 2017	Grey Space Architecture
2010 – 2012	Morris Bay Martin Ollmann
2007 – 2009	Elevation Architecture

# MATT TONG

Architectural Graduate



Matt joined the Elevation team in 2022. Born in Canada and raised in Hong Kong, Matt finished his Master of Architecture at the Queensland University of Technology. He worked in Hong Kong on various projects, from high-rise commercial buildings to churches and houses, and returned to Australia in 2020 to continue his career.

Matt applies his expertise to create aesthetically pleasing and functional environments tailored to the specific needs of a project, which includes childcare, commercial and residential work. He is passionate about broadening his knowledge and committed to delivering excellence and contributing positively to the community.

Prior to Elevation, Matt honed his skills in a local architecture firm, specialising in residential and small-scale commercial ventures.

Matt enjoys playing badminton, and cooking, as well as diving into his fascination with the latest technology and electronic dance music.

## Qualifications

Master of Architecture	Queensland University of Technology
Bachelor of Design (Architectural Studies – Honours)	Queensland University of Technology

## Professional Experience

2022 – present	Elevation Architecture
2020 – 2022	Ever Architecture Studio
2019 – 2020	Theo Texture (Hong Kong), Studio RCA (Hong Kong)



# KATIE FURNER

Architectural Graduate



Katie joined the Elevation team in 2018 after graduating from her Bachelor of Architectural Design. She recently completed her Master of Architecture at The University of Queensland.

Katie has been involved in a wide range of childcare, education and commercial projects. Through this variety of experience across all stages of the design process, Katie has not only developed her strong design and documentation skills, but also uncovered a particular interest in construction detailing.

Katie has a keen personal interest in residential architecture and creating unique and sustainable small-scale living spaces.

## Qualifications

Master of Architecture	University of Queensland
Bachelor of Architectural Design	University of Queensland

## Professional Experience

2017 – present	Elevation Architecture
----------------	------------------------

## KEY PROJECTS

Fifth Avenue Lifestyle North Lakes, Southport / Fortescue Future Industries Manufacturing Centre

# RUTUJA KIRAN KHATU

Architectural Graduate



Rutuja joined the Elevation team in 2023. Rutuja is a registered architect in India and moved to Australia in 2020 to undertake her Master of Architecture degree. She completed her studies at the University of Queensland in 2021.

Rutuja has architecture experience internationally and within Queensland and has extensive knowledge of large-scale projects. She has worked from concept design to preparing construction documentation across various typologies, including multi-residential high-rise buildings, town-houses, education facilities, resorts, master planning and mixed-use development. Rutuja has a strong understanding of the development process and is passionate about achieving high-quality, holistic design outcomes and optimal results for clients.

Rutuja paints, does crafts and plays basketball. She also loves to travel and cook, exploring different cuisines and sharing food with family and friends.

### Qualifications

Master of Architecture	University of Queensland
Bachelor of Architecture	SPPU University

### Professional Experience

2023 – present	Elevation Architecture
2022 – 2023	MAS Architecture Studio
2019	Tomato Architectural Solutions Pty Ltd
2018	Archmax Architects & Planners
2016 – 2017	Node



# MADDY FITZGERALD

Architectural Graduate



Maddy has been part of the Elevation team since 2021, bringing her experience in education and residential design. She has a passion for design that prioritises user well-being, human connection and sensitivity to context.

Maddy completed her Master of Architecture in 2023 and strives to challenge and immerse herself in new design opportunities. Maddy’s interest in nature and the outdoors has led her to investigate biophilic design methods and integrating natural elements within architecture.

Maddy enjoys camping and being outside in the peace and quiet, reading a good book, staying fit with pilates classes and trying her hand at new cocktail recipes.

### Qualifications

Master of Architecture	Queensland University of Technology
Bachelor of Design (Architectural Studies)	Queensland University of Technology

### Professional Experience

2021 – present	Elevation Architecture
2019 – 2020	RA Architects

### KEY PROJECTS

St Patrick’s College Masterplan / Arethusa College / Concordia Lutheran College

# MARKOS HUGHES

Architectural Graduate



Markos joined the Elevation team in 2023 as an architectural graduate. Markos was born in Ethiopia and completed his architecture degrees at the Queensland University of Technology. With a passion for sustainable architecture and disaster response, Markos undertook further studies in Barcelona and Milan, where he focused on international development and emergency architecture.

Markos is particularly interested in how good design can improve the community especially for social development, and he is always keen to learn and apply his skills to maximise the best outcomes.

Prior to Elevation, Markos worked on a variety of projects, including schools, aged care and local council facilities in South East Queensland and Sydney.

As a big fan of the great outdoors, Markos loves hiking and camping, and has started going on motorbike camping adventures.

## Qualifications

Master of Architecture	Queensland University of Technology
Graduate Certificate – Emergency & Disaster Management	Queensland University of Technology
Master of International Cooperation Sustainable Emergency Architecture	Barcelona International University of Catalonia
Bachelor of Architecture	Queensland University of Technology

## Professional Experience

2023 – present	Elevation Architecture
2021 – 2022	BW Architects
2015 – 2019	Fulton Trotter Architects



# MURRAY BROWN

Architectural Graduate



Murray joined the Elevation team in early 2022, having just completed his Master of Architecture at Griffith University. Murray has contributed to a variety of projects, from childcare facilities to disability accommodation, and hopes to specialise in the medical and healthcare sector.

Murray has a keen interest in architectural design, detailing and visualisation, and establishes effective relationships with clients and consultants in order to achieve the best outcomes.

Murray has a passion for scuba diving and enjoys spending time with family and travelling along the QLD and NSW coast.

## Qualifications

Master of Architecture	Griffith University
Bachelor of Design	Griffith University

## Professional Experience

2022 – present	Elevation Architecture
----------------	------------------------

# ZACHARY BRADFORD

Architectural Graduate



Zac first joined the Elevation team in 2017 as an architectural student, and re-joined in 2024 as an architectural graduate, after acquiring his Master of Architecture and gaining further experience in commercial architecture.

Zac has worked on a variety of projects, from small house extensions to a 12-storey medical facility. While these range in scale, his process is always driven by creating quality and meaningful outcomes for all stakeholders.

Zac enjoys travelling to new cities and running or hiking to explore the sights. He can often be seen running around the Brisbane River as he trains to fulfil his dream of qualifying for a World Marathon Major.

### Qualifications

Master of Architecture	University of Queensland
Bachelor of Architecture	University of Queensland

### Professional Experience

2017 – 2020	Elevation Architecture
2021 – 2023	77 Architecture
2024 – present	Elevation Architecture



# HANNAH ADSETT

Architectural Student



Hannah has been part of the Elevation team since 2021, having completed her Bachelor of Architectural Design at the University of Queensland. She has worked on SDA and childcare projects and is involved in all stages of the design process from initial concept to construction documentation.

Passionate about sustainable design, Hannah is interested in developing architecture that integrates passive design strategies to cater for both the client and the environment. She is also developing her skills in design and graphic representation, and the use of technology within these areas.

Hannah loves watching live sport, trivia nights and going to concerts – especially Taylor Swift.

## Qualifications

Bachelor of Architectural Design	University of Queensland
----------------------------------	--------------------------

## Professional Experience

2021 – present	Elevation Architecture
----------------	------------------------

# ISABELLE NG

Architectural Student



Isabelle joined the Elevation team in 2022, having completed her Bachelor of Architectural Design at the University of Queensland.

Isabelle has worked across a variety of projects, including residential, commercial and education projects. She is particularly interested in design as a holistic process that is considerate of context, community and the natural environment.

Outside of work, Isabelle can be found shopping for her next house plant or working away at a knitting project while watching nature documentaries.

## Qualifications

Bachelor of Architectural Design	University of Queensland
----------------------------------	--------------------------

## Professional Experience

2022 – present	Elevation Architecture
----------------	------------------------

# ALANA MARKIE

Architectural Student



Alana joined the Elevation team in 2021 and has since completed her Bachelor of Design (Architecture) at Queensland University of Technology.

Alana has worked on a variety of projects, including childcare, SDA, warehouses, offices, duplexes and a mining camp. She is interested in creating functional spaces that have a connection to the user and applies these ideas to a broad range and scale of projects.

Alana enjoys camping and is a keen dancer, having studied ballet, jazz and tap dancing. She loves experimenting with different arts and crafts and is always the first in the office to line up for concert tickets.

## Qualifications

Bachelor of Architectural Design (Architectural Studies)	Queensland University of Technology
--	-------------------------------------

## Professional Experience

2021 – present	Elevation Architecture
----------------	------------------------



# JAENYNE TAN

Architectural Student



Jaenye joined the Elevation team in 2024, after graduating from her Bachelor of Architectural Design at the University of Queensland.

Jaenye has a particular interest in architecture that is not only sustainable, but also enriches people’s lives through memory making. She is fascinated by how spaces can become a backdrop for creating memories – like a blank canvas for creating art.

Jaenye enjoys assembling LEGO® sets and cooking up one-pot dishes for the week.

## Qualifications

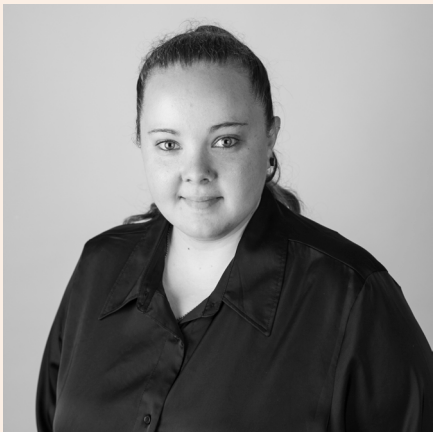
Bachelor of Architectural Design	University of Queensland
----------------------------------	--------------------------

## Professional Experience

2024 – present	Elevation Architecture
----------------	------------------------

# JESS HUTTON

Administrative Assistant



Jess has been part of the Elevation team since 2021, bringing more than 15 years of experience in a variety of administration roles. She had most recently worked at Luther Heights youth camp, a client of Elevation Architecture.

Jess has worked across different industries, including sports, music, medical, recreation and now, the architectural industry. She meets every challenge with enthusiasm and determination and believes in progress and change. Jess is developing Elevation’s ethical and sustainable procurement processes, ensuring that we make purchasing decisions focused on suppliers who offer sustainability, ethical practices and community benefit.

Jess loves exploring new camping spots in our local region. She is a talented singer and musician, and always up to date on where to get the best chicken wings.

Professional Experience

2021 – present	Elevation Architecture
2015 – 2021	Luther Heights Youth Camp
2013 – 2015	Silky Oaks Medical Centre
2008 – 2012	Redeemer Lutheran College

Give us a call on 07 3251 6900,  
visit [www.elevationarchitecture.com.au](http://www.elevationarchitecture.com.au) or  
drop by our office, to see how we can turn  
your vision into reality.

## Our Office Details

### QUEENSLAND HEAD OFFICE

20 Prospect Street  
Fortitude Valley QLD 4006  
P 07 3251 6900 (Local)  
1300 694 500 (National)  
E [info@elevationarchitecture.com.au](mailto:info@elevationarchitecture.com.au)

### DIRECTOR DETAILS

Greg Adsett  
M 0414 320 037  
E [greg@elevationarchitecture.com.au](mailto:greg@elevationarchitecture.com.au)  
Registered Architect  
2812 (QLD), 17199 (VIC), 8372 (NSW)

### STATUTORY REGISTRATION DETAILS

Australian Business Number  
70 606 170 870

Professional Indemnity Policy  
07SUN002868/07

Work Cover QLD Policy  
WAD150876134

Work Safe VIC Policy  
14569294

AIA A+ Practice Member  
E67



